

Test Report

No. SDHL17050101200T

Date: Jun.01, 2017

Page 1 of 5

FOSHAN SITZONE FURNITURE CO., LTD
NO.8 OF CHAOHAI ROAD, XIQING VILLAGE, LONGJIANG TOWN,
SHUNDE DISTRICT, FOSHAN CITY, GUANGDONG PROVINCE

The following sample(s) was / were submitted and identified on behalf of the client as:

Sample Description : SF FABRIC SAMPLE
Buyer Item No. : JEFFERSON FABRIC
Supplier Item No. : SF
Buyer : WOODSTOCK MARKETING L.L.C
Manufacturer : FOSHAN SITZONE FURNITURE CO., LTD
Supplier : HUAYU WANG BU
Country of Origin : CHINA
Country of Destination : USA
Sample Receiving Date : May 23, 2017
Test Performing Date : May 23, 2017 to May 31, 2017

Test Result Summary

No.	Test(s) Requested	Result(s)	Comments
1	California Technical Bulletin 117-2013 Section 1	PASS	/
2	Determination of Lead (Pb) & Cadmium (Cd) content(s) of the selected parts in the submitted sample(s) with reference to California Proposition 65.	PASS	/
	Determination of Phthalates(DBP, BBP, DEHP, DINP, DNOP, DIDP, DnHP) contents of the selected parts in the submitted sample(s) with reference to California Proposition 65.	PASS	/

For further details, please refer to the following page(s)

Signed for and on behalf of
Shunde Branch
SGS-CSTC Co., Ltd.



Jack Yao
Approved signatory



Unless otherwise agreed in writing, this document is issued by the Company subject to its General Conditions of Service printed overleaf, available on request or accessible at <http://www.sgs.com/en/Terms-and-Conditions.aspx> and, for electronic format documents, subject to Terms and Conditions for Electronic Documents at <http://www.sgs.com/en/Terms-and-Conditions/Terms-e-Documents.aspx>. Attention is drawn to the limitation of liability, indemnification and jurisdiction issues defined therein. Any holder of this document is advised that information contained hereon reflects the Company's findings at the time of its intervention only and within the limits of Client's instructions, if any. The Company's sole responsibility is to its Client and this document does not exonerate parties to a transaction from exercising all their rights and obligations under the transaction documents. This document cannot be reproduced except in full, without prior written approval of the Company. Any unauthorized alteration, forgery or falsification of the content or appearance of this document is unlawful and offenders may be prosecuted to the fullest extent of the law. Unless otherwise stated the results shown in this test report refer only to the sample(s) tested and such sample(s) are retained for 30 days only.

Attention: To check the authenticity of testing / inspection report & certificate, please contact us at telephone: (86-755) 8307 1443, or email: CN.Doccheck@sgs.com

SGS-CSTC Inspection & Testing Services Co., Ltd.
Shunde Branch Harbin

1/F, 1st Building European Industrial Park, No.1 Shunde South Road, Wusha Section, Daliang Town, Shunde, Foshan, Guangdong, China 528333 t (86-757)22805888 f (86-757)22805858 www.sgs.com.cn
中国·广东·佛山市顺德区大良街道办事处五沙顺和南路1号欧洲工业园一号厂房首层 邮编: 528333 t (86-757)22805888 f (86-757)22805858 e sgs.china@sgs.com

Part 1

Test Conducted:

TB117 Requirements, Test Procedure and Apparatus for Testing the Smolder Resistance of Materials Used in Upholstered Furniture-2013 Section 1- Cover Fabric Test

I. Sample Details

Material:	Fabric	Density of sample:	399 g/m ²
-----------	--------	--------------------	----------------------

II. Test Condition

---	Temperature	Relative humidity	Duration
Conditioning of test samples and cigarettes	(21±3) °C	RH < 55 %	24h

III. Acceptance Criteria:

1. A single mock-up test specimen fails to meet the requirements of this test procedure if any of the following criteria occurs:
 - a) The mock-up test specimen continues to smolder after the 45 minutes test duration;
 - b) A vertical char length of more than 1.8 inches develops on the cover fabric;
 - c) The mock-up test specimen transitions to open flaming.
2. The cover fabric passes the test if three initial mock-up specimens pass the test, i.e., the cigarettes burn their full length and the mock-ups are no longer smoldering.
3. If more than one initial specimen fails, the cover fabric fails the test.
4. If any one of the three initial specimens fails, repeat the test on additional three specimens.
5. If all three additional specimens pass the test, the cover fabric passes the test. If any one of the additional three specimens fails, the cover fabric fails the test.

IV. Test Result

Specimen #	Duration of smouldering (min : sec.)	Open flaming (YES/NO)	Vertical Char Length (inches)	Rating
1	32min49s	NO	0.5	PASS
2	33min37s	NO	0.5	PASS
3	32min15s	NO	0.5	PASS

Conclusion: PASS



Unless otherwise agreed in writing, this document is issued by the Company subject to its General Conditions of Service printed overleaf, available on request or accessible at <http://www.sgs.com/en/Terms-and-Conditions.aspx> and, for electronic format documents, subject to Terms and Conditions for Electronic Documents at <http://www.sgs.com/en/Terms-and-Conditions/Terms-e-Documents.aspx>. Attention is drawn to the limitation of liability, indemnification and jurisdiction issues defined therein. Any holder of this document is advised that information contained hereon reflects the Company's findings at the time of its intervention only and within the limits of Client's instructions, if any. The Company's sole responsibility is to its Client and this document does not exonerate parties to a transaction from exercising all their rights and obligations under the transaction documents. This document cannot be reproduced except in full, without prior written approval of the Company. Any unauthorized alteration, forgery or falsification of the content or appearance of this document is unlawful and offenders may be prosecuted to the fullest extent of the law. Unless otherwise stated the results shown in this test report refer only to the sample(s) tested and such sample(s) are retained for 30 days only.

Attention: To check the authenticity of testing / inspection report & certificate, please contact us at telephone: (86-755) 8307 1443, or email: CN.Doccheck@sgs.com

SGS-CSTC Standards Technical Services Co., Ltd.
Shunde Branch Harbin

1/F, 1st Building European Industrial Park, No.1 Shunde South Road, Wusha Section, Daliang Town, Shunde, Foshan, Guangdong, China 528333 t (86-757)22805888 f (86-757)22805858 www.sgs.com.cn
中国·广东·佛山市顺德区大良街道办事处五沙顺和南路1号欧洲工业园一号楼首层 邮编: 528333 t (86-757)22805888 f (86-757)22805858 e sgs.china@sgs.com

Photo Appendix:



Unless otherwise agreed in writing, this document is issued by the Company subject to its General Conditions of Service printed overleaf, available on request or accessible at <http://www.sgs.com/en/Terms-and-Conditions.aspx> and, for electronic format documents, subject to Terms and Conditions for Electronic Documents at <http://www.sgs.com/en/Terms-and-Conditions/Terms-e-Documents.aspx>. Attention is drawn to the limitation of liability, indemnification and jurisdiction issues defined therein. Any holder of this document is advised that information contained hereon reflects the Company's findings at the time of its intervention only and within the limits of Client's instructions, if any. The Company's sole responsibility is to its Client and this document does not exonerate parties to a transaction from exercising all their rights and obligations under the transaction documents. This document cannot be reproduced except in full, without prior written approval of the Company. Any unauthorized alteration, forgery or falsification of the content or appearance of this document is unlawful and offenders may be prosecuted to the fullest extent of the law. Unless otherwise stated the results shown in this test report refer only to the sample(s) tested and such sample(s) are retained for 30 days only.

Attention: To check the authenticity of testing / inspection report & certificate, please contact us at telephone: (86-755) 8307 1443, or email: CN.Doccheck@sgs.com

Test Report

No. SDHL17050101200T

Date: Jun.01, 2017

Page 4 of 5

Part 2 (SGS Ref. No.: CAN17-095768)

Test Results :

Test Part Description :

Specimen No.	SGS Sample ID	Description
SN1	CAN17-095768.001	Taupe/ dark brown fabric

Remarks :

- (1) 1 mg/kg = 0.0001%
- (2) MDL = Method Detection Limit
- (3) ND = Not Detected (< MDL)
- (4) "-" = Not Regulated

CA65-Lead (Pb) & cadmium(Cd)

Test Method : With reference to CPSC-CH-E1002-08.3. Analysis was performed by ICP-OES.

Test Item(s)	Limit	Unit	MDL	001
Lead (Pb)	100	mg/kg	20	ND
Cadmium (Cd)	300	mg/kg	5	ND

Note :

- (1) The limit is referenced to the requirement as stated in the County of San Francisco Superior Court, Case No. CGC-09-489839/CGC-08-476552/CGC-11-508435/CGC-01-319336/CGC-10-505118/County of Santa Clara Case No 110 CV 172362/the Superior Court of the State of California Case No CIV 1003366/County of Alameda Superior Court, RG 10-530436/10-530300/RG-07-356892/RG-10-514803/County of Contra Costa Case No. CGC-09-485784/County of Marin Case No. CIV-10-00626/ Senate Bill No. 929 and Public Law (Consumer Product Safety Improvement Act of 2008, CPSIA).



Unless otherwise agreed in writing, this document is issued by the Company subject to its General Conditions of Service printed overleaf, available on request or accessible at <http://www.sgs.com/en/Terms-and-Conditions.aspx> and, for electronic format documents, subject to Terms and Conditions for Electronic Documents at <http://www.sgs.com/en/Terms-and-Conditions/Terms-e-Documents.aspx>. Attention is drawn to the limitation of liability, indemnification and jurisdiction issues defined therein. Any holder of this document is advised that information contained hereon reflects the Company's findings at the time of its intervention only and within the limits of Client's instructions, if any. The Company's sole responsibility is to its Client and this document does not exonerate parties to a transaction from exercising all their rights and obligations under the transaction documents. This document cannot be reproduced except in full, without prior written approval of the Company. Any unauthorized alteration, forgery or falsification of the content or appearance of this document is unlawful and offenders may be prosecuted to the fullest extent of the law. Unless otherwise stated the results shown in this test report refer only to the sample(s) tested and such sample(s) are retained for 30 days only.

Attention: To check the authenticity of testing / inspection report & certificate, please contact us at telephone: (86-755) 8307 1443, or email: CN.Doccheck@sgs.com

SGS-CSTC (Shunde) Technical Services Co., Ltd.
Shunde Branch Harbin

1/F, 1st Building European Industrial Park, No.1 Shunde South Road, Wusha Section, Daliang Town, Shunde, Foshan, Guangdong, China 528333 t (86-757)22805888 f (86-757)22805858 www.sgs.com.cn
中国·广东·佛山市顺德区大良街道办事处五沙顺和南路1号欧洲工业园一号厂房首层 邮编: 528333 t (86-757)22805888 f (86-757)22805858 e sgs.china@sgs.com

CA65- Phthalates

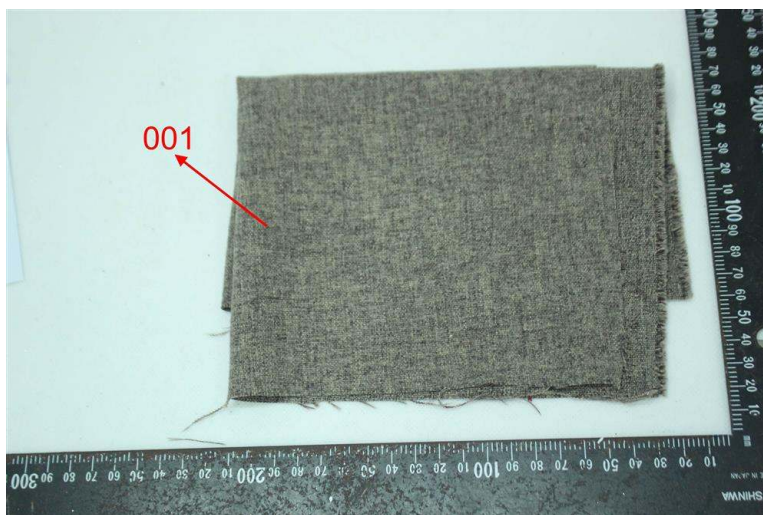
Test Method : With reference to CPSC-CH-C1001-09.3, analysis was performed by GC-MS

Test Item(s)	CAS NO.	Limit	Unit	MDL	001
Dibutyl Phthalate (DBP)	84-74-2	0.1	%(w/w)	0.005	ND
Benzylbutyl Phthalate (BBP)	85-68-7	0.1	%(w/w)	0.005	ND
Bis(2-ethylhexyl) Phthalate (DEHP)	117-81-7	0.1	%(w/w)	0.005	ND
Diisononyl Phthalate (DINP)	28553-12-0 / 68515-48-0	0.1	%(w/w)	0.005	ND
Di-n-octyl Phthalate (DNOP)	117-84-0	0.1	%(w/w)	0.005	ND
Diisodecyl Phthalate (DIDP)	26761-40-0 / 68515-49-1	0.1	%(w/w)	0.005	ND
Di-n-hexyl Phthalate (DnHP)	84-75-3	0.1	%(w/w)	0.005	ND

Note :

- (1) The limit of DBP, BBP, DEHP, DIDP and DnHP is referenced to the requirement stated in Alameda Superior Court, BG-07-350969. The limit for DINP is reference to the requirement as stated in County of Santa Clara Superior Court, 114CV267501, The limit of DNOP is 0.1% in accordance with the requirement of children product stated in Public Law (Consumer Product Safety Improvement Act of 2008, CPSIA).

Photo Appendix:



Remark: This test was subcontracted to SGS-CSTC Standards Technical Services Co.,Ltd. Guangzhou Branch.

End of Report



SGS-CSTC Standards Technical Services Co., Ltd.
Shunde Branch Harbin

Unless otherwise agreed in writing, this document is issued by the Company subject to its General Conditions of Service printed overleaf, available on request or accessible at <http://www.sgs.com/en/Terms-and-Conditions.aspx> and, for electronic format documents, subject to Terms and Conditions for Electronic Documents at <http://www.sgs.com/en/Terms-and-Conditions/Terms-e-Documents.aspx>. Attention is drawn to the limitation of liability, indemnification and jurisdiction issues defined therein. Any holder of this document is advised that information contained hereon reflects the Company's findings at the time of its intervention only and within the limits of Client's instructions, if any. The Company's sole responsibility is to its Client and this document does not exonerate parties to a transaction from exercising all their rights and obligations under the transaction documents. This document cannot be reproduced except in full, without prior written approval of the Company. Any unauthorized alteration, forgery or falsification of the content or appearance of this document is unlawful and offenders may be prosecuted to the fullest extent of the law. Unless otherwise stated the results shown in this test report refer only to the sample(s) tested and such sample(s) are retained for 30 days only.

Attention: To check the authenticity of testing / inspection report & certificate, please contact us at telephone: (86-755) 8307 1443, or email: CN.Doccheck@sgs.com

1F, 1 Building European Industrial Park, No.1 Shunde South Road, Wusha Section, Daliang Town, Shunde, Foshan, Guangdong, China 528333 t (86-757)22805888 f (86-757)22805858 www.sgs.com.cn
中国·广东·佛山市顺德区大良街道办事处五沙顺和南路1号欧洲工业园一号厂房首层 邮编: 528333 t (86-757)22805888 f (86-757)22805858 e sgs.china@sgs.com